

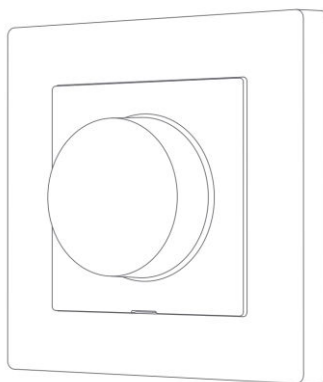
Dimmer Switch H2 EU User Manual

- 【EN】 Dimmer Switch H2 EU User Manual
- 【RU】 Настенный диммер H2 EU Руководство по эксплуатации
- 【DE】 Bedienungsanleitung für Dimmschalter H2 EU
- 【FR】 Interrupteur Variateur H2 EU Manuel d'utilisation
- 【ES】 Manual de instrucciones para Regulador de Luz H2 EU
- 【IT】 Interruttore Dimmer H2 EU Manuale di Istruzioni
- 【PL】 Instrukcja obsługi Inteligentny ściemniacz H2 EU
- 【CS】 Stmívací vypínač H2 EU Uživatelská příručka
- 【SK】 Stmievací vypínač H2 EU Používateľská príručka
- 【HU】 Dimmer kapcsoló H2 EU Használati utasítás
- 【EL】 Εγχειρίδιο χρήσης Ρυθμιστής Φωτισμού H2 EU
- 【NL】 Gebruikershandleiding voor Dimmer Switch H2 EU
- 【GR】 Εγχειρίδιο χρήστη Dimmer Switch H2 EU
- 【KO】 디머 스위치 H2 EU 사용자 매뉴얼

【EN】

Product Introduction

Aqara Dimmer Switch H2 EU is based on the Thread/Zigbee wireless communication protocol and can Work with or without a Neutral wire. It is compatible with a variety of lamps, including incandescent lamps, halogen lamps, dimmable LEDs and dimmable CFLs. Users can switch between the forward phase and reverse phase dimming mode based on load type to achieve brightness adjustment and switch control. It allows for remote control via the app, scheduling, power monitoring, power statistics, and other functions. Additionally, it can be used with other smart devices to achieve various interconnected control effects.



* To use the device with a particular Matter ecosystem, a Matter Controller of this ecosystem and a Thread Border Router are required.

* For the lights compatibility information, please visit <https://www.aqara.com/eu>

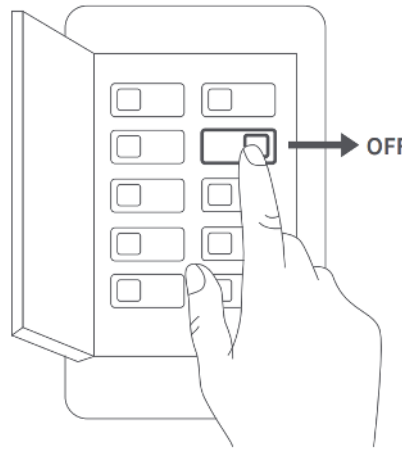
Warnings

1. This product is not a toy. Please keep children away from this product.
2. This product is designed for indoor use only.
3. Do not use in humid environments or outdoors.
4. Beware of moisture. Do not spill water or other liquids onto the product.
5. Do not place this product near a heat source. Do not place it in an enclosure unless there is normal ventilation. Do not attempt to repair this product by yourself. All repairs should be performed by an authorized professional.
6. This product is suitable for improving the quality of your home life and reminding you about the device status. If a user violates the product use instructions, the manufacturer will not be liable for any risks and property losses.
7. Use the Device only with dimmable lights! Using non-dimmable ones may damage the Device or the light.

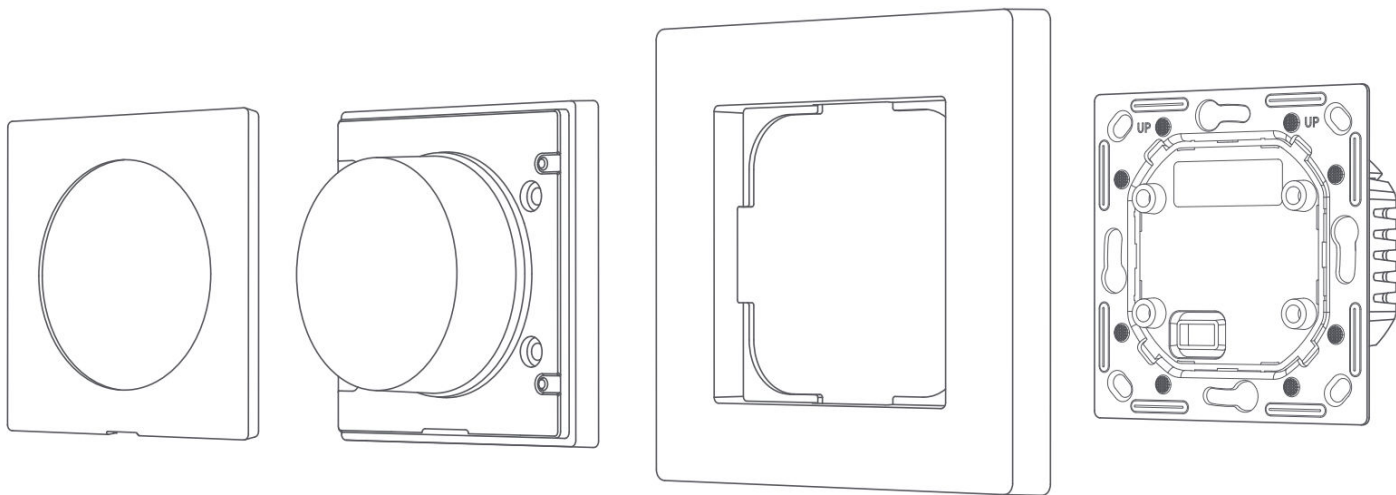
8. Do not connect the Device to appliances exceeding the given max load!
9. Connect the Device only in the way shown in these instructions. Any other method could cause damage and/or injury.

Installation Method

Please make sure that the power at circuit breaker or fuse box is turned off before wiring!



1. Disassemble the switch into: switch plate, switching unit, switch frame, and power unit.



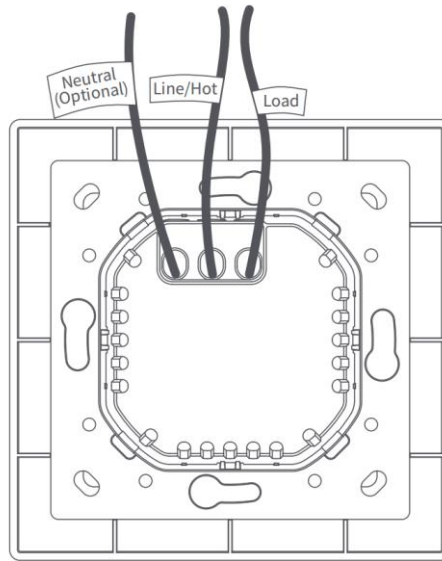
Switch Plate

Switching Unit

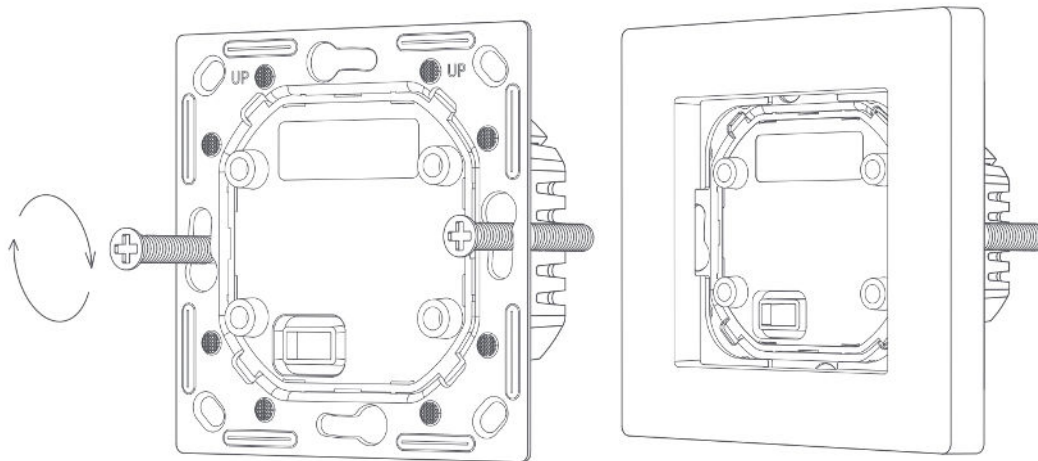
Switch Frame

Power Unit

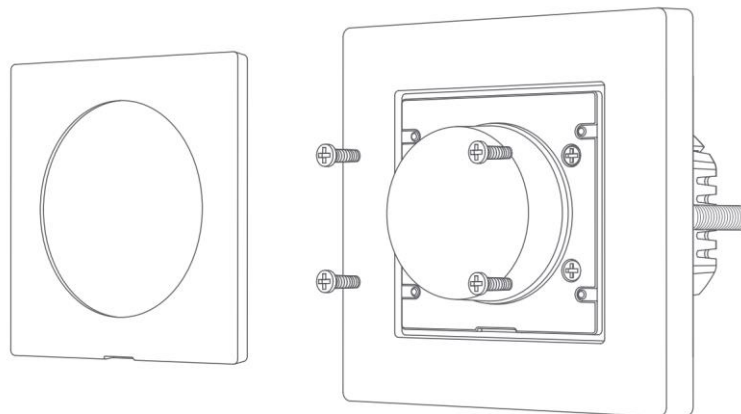
2. Loosen the terminal screw on the back of the switch with the screwdriver, connect the live wire to the hole L, the neutral wire to the hole N (if necessary), and the load (light) wire to the hole L1, and tighten the terminal screws after confirming that the wiring is correct.



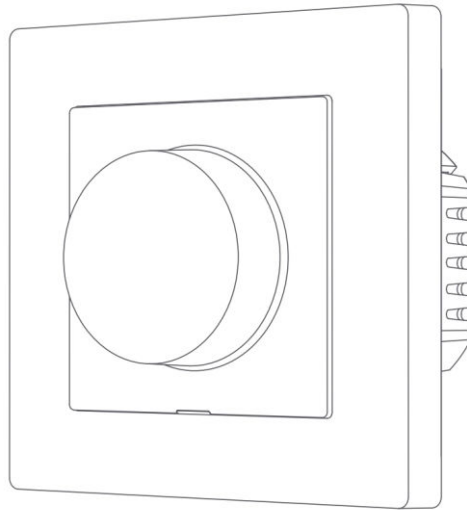
3. Mount the power unit of the switch to the wall junction box with the attached screws and mount the switch frame



4. Align the pins of the switching unit with the power unit, and snap them together, then use provided screws to to securely fasten them in place



5. Snap the switch plate into place



6. Turn on main power at the circuit breaker, and test the switch by pressing the button. If the light can be controlled normally, the switch is working properly!

Quick Setup

1. Please make sure you have installed the Matter-compatible app and have a Matter-compatible Thread border router.
2. Please scan the QR code on the electronic instruction manual and follow the prompts to install the switch correctly. Once the switch is powered on, the indicator light will start blinking slowly, indicating that the device has entered the network configuration mode.
3. Open the Matter-enabled app, scan the Matter QR code on the instruction manual or product, or enter the setup code to add the device to the app.

* The device supports Thread/Zigbee protocol connection that increases product compatibility and functionality. When adding the device to Aqara Home app for the first time, you will be able to choose the mode according to your preferences.

At the same time, in case of connecting the device directly to the third-party ecosystem, the Thread mode will be enabled by default. hub is required for Zigbee mode.

How to use

1. Minimum Brightness

This feature minimizes LED bulb flickering and strobing when the dimmer is at the minimum light level. This feature can also be used to set a personal preference.

If the connected light is not working below a certain percentage, you can set the minimum percent at which Dimmer Switch H2 EU will turn on.. Once set, the light cannot be dimmed below this minimum threshold. Adjustable range: 1% to 100%.

- 1) Double-press, and then rotate within 3 seconds of the press to enter the minimum brightness setting mode
- 2) Rotate the knob counterclockwise to adjust to the minimum brightness, single press to save. The indicator light will flash blue twice aer the setting is successful

2. Warm up

This function can prevent the lamp from abruptly turning on at full brightness, which can cause unnecessary light pollution or eye irritation, and can also extend the life of the lamp. Users can adjust these parameters through the dimmer setting interface according to their personal preferences and actual needs.

Some lights require a certain power impulse, in order to start below 100% brightness. You can set the brightness level and time at which Dimmer Switch H2 EU will turn on. Brightness range: 1 - 100%. Time range: 1 - 10s

3. Phase Selection

Reverse Phase is the default setting.

- 1) Press five times to enter the phase selection mode
- 2) Press to switch the phase (red: Forward Phase, blue: Reverse Phase), long press to confirm the setting

Forward Phase: Used for Incandescent, LED, CFL, and some Fluorescent controls (certain Fluorescent controls require forward phase.)

Reverse Phase: Used for LED, CFL, Electronic Low Voltage (ELV), and some LED drivers or Incandescent loads. (ELV requires reverse phase dimming.)

Load	Usage	Rating
Incandescent/Halogen	Compatible with both forward and reverse phase	Incandescent/Halogen<300W
CFL	Compatible with both forward and reverse phase	Dimmable CFL≤200W
LED	Compatible with both forward and reverse phase, but reverse phase often provides better performance	Dimmable LED≤200W
ELV (Electronic Low Voltage)	Must use reverse phase to proper function due to electronic transformer characteristics	ELV≤200W
Minimum Power: 4W(Aqara Home via Matter), 9W(other methods), general purpose <i>*When only using a 4W light bulb in Aqara Home, please set the maximum brightness to 70%-75% to prevent flickering.</i>		

Note: Please always follow our load-specific recommendations for optimal Dimmer Switch H2 EU performance and safety.

Button Operations

Button Operations	Description
Single press	Turn on/off
Press five times	Entering phase selection mode
Rotate (the knob)	Brightness up/down
Double press, then hold for 5 seconds within 3 seconds of the initial press	Reset the device/ enable network connection
Double press, then rotate within 3 seconds, and single press to confirm set value	Set minimum brightness

Description of Indicator Lights

Color	Activity	Description
Blue	Quick Flash	Device powering on/device pairing/ device finding/device deleting
Blue	Slow Blink	Networking
Blue	Ultra Slow Flash	Pairing successful/Switch to Reverse Phase
Red	Quick Flash	Device online
Red	Solid	Overheat/Overload
Red	Ultra Slow Flash	Pairing Timeout/Switch to Forward Phase
Purple	Slow Flash	Phase Selection mode
*Ultra Slow Flash (0.05 seconds) will have a much shorter duration of light compared to Slow Flash: 0.5 seconds), creating a very subtle visual signal.		

Product Specifications

Dimmer Switch H2 EU

Model: KD-R01E/KD-R01D

Wireless Protocols: Thread/Zigbee, Bluetooth

Electrical Rating: 220-240VAC, 50/60Hz

Rated Load: Incandescent/Halogen ≤ 300W, Dimmable LED/CFL ≤ 200W

Rated Type: **Incandescent Halogen LED CFL**, μ

Minimum Power: 4W (Aqara Home via Matter), 9W (other methods), general purpose

Dimensions: 86 × 86 × 55.45 mm (3.39 × 3.39 × 2.18 in.)

Operating Temperature: 0°C ~ 40°C (32°F ~ 104°F)

Operating Humidity: 0 ~ 95% RH, no condensation

Made in China

What is in the Box: Dimmer Switch H2 EU × 1, User Manual × 1, Compliance Statement× 1, Screw Kit × 1

Notice

Use of the Works with Apple badge means that an accessory has been designed to work specifically with the technology identified in the badge and has been certified by the developer to meet Apple’s performance standards. Apple is not responsible for the operation of this device or its compliance with safety and regulatory standards.

|

|

|

|

|